

TIMER DRAIN 8000000-D

2 Way Electric Timer Drain Ball Valve



Technical Parameters

Valve size	1/4" 3/8" 1/2" 3/4" 1" 1-1/4" (Optional)
Type	Electric Drain Valve
Maximum working pressure	145 PSI
Circulation medium	Fluid, air
Rated voltage	9-24V AC/DC, 110-230VAC (Optional)
Working current	.5A
Open/close time	≤7 S
Life time	70,000 times (testing pressure is 58 psi, medium is water)
Valve body material	Brass, 304SS, 316SS (Optional)
Actuator material	Engineering Plastics PPO
Sealing material	FKM & PTFE
Actuator rotation	90°
Torque force	26.5 in*lbf
Cable Length	19"
Environment temperature	5°F~140°F
Liquid temperature	35°F~194°F
Manual operation	No
Open/close indicator	Yes
Protection class	IP67
Certificate	LVD, EMC, ROHS and some SS304 valves passed NSF61-G
Company quality management system	ISO 9001:2015

Instruction

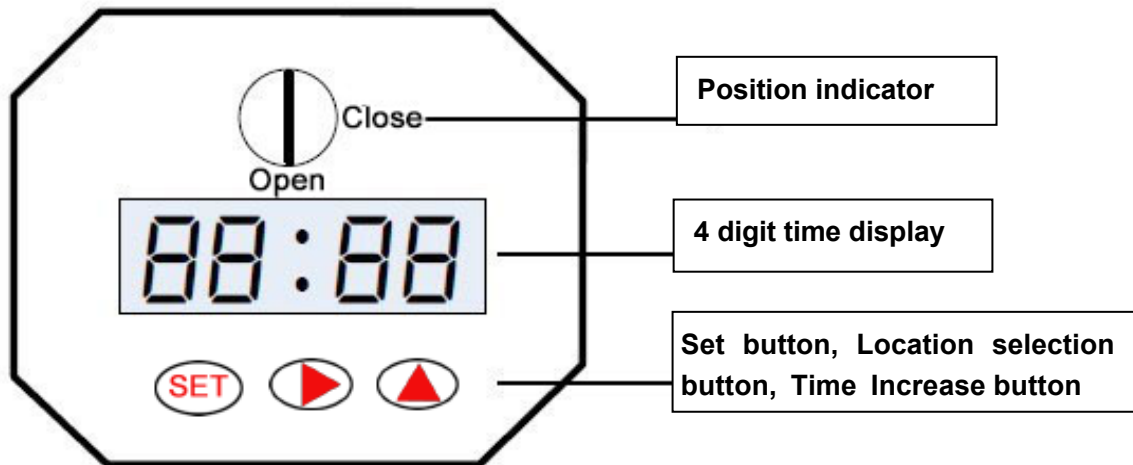
Parameter specifies

Working voltage : 110~230VAC, 9-24VAC/DC Time

open range : 0 H : 0M :0S ~ 99 H 59 M 59 S Time

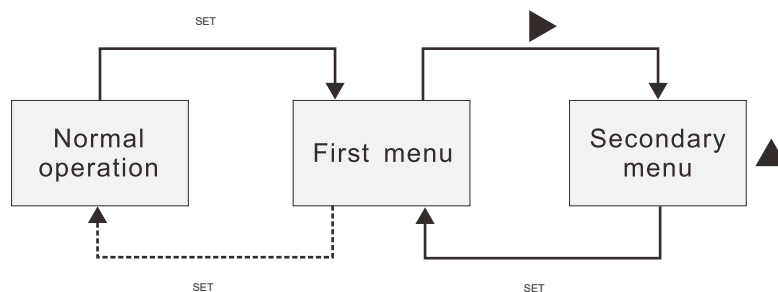
closed range : 0 H : 0M :0S ~ 99 H 59 M 59 S

Timer specification



Operation instruction

Actuator setting parameters have two menu structures below: Function (first menu). The settings for the chosen function (secondary menu)

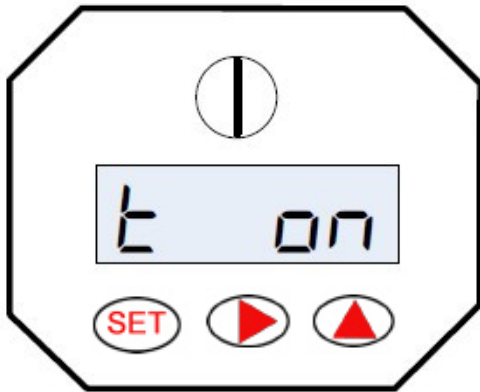


Picture 0

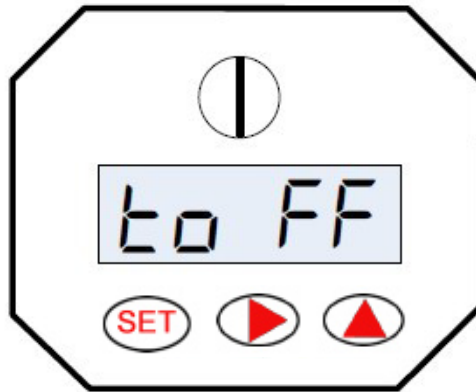
Secondary menu operation flowchart :

Function code	Content	Value	Unit	Remarks
t on	Valve open time	00:00:00 – 99:59:59	H:M:S	
t oFF	Valve closed time	00:00:00 – 99:59:59	H:M:S	
P onS	Power on action	On/off		
Cnt	The open & close times	0-9999	TIMES	The total number of open & close cycles can be viewed in the menu

Function Control Table

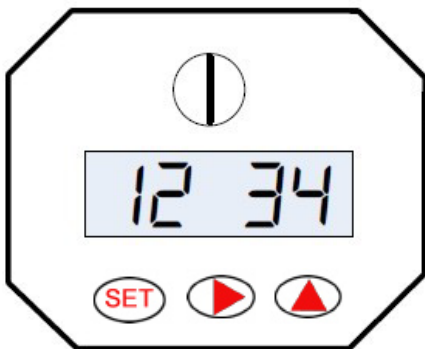


Picture 1



picture 2






- 1 Press **SET** hold for 4 seconds and enter the first menu. The screen display (picture 1) text (t on). Enter the desired time for the valve to be open.
- 2 Press **SET** again, hold for 4 seconds and enter the second menu. The screen display (picture 1) text (t off). Enter the desired time for the valve to be closed.

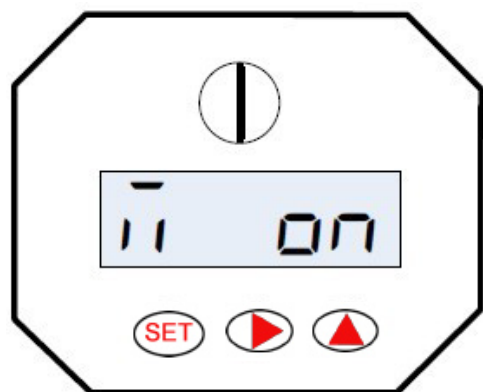


Picture 3

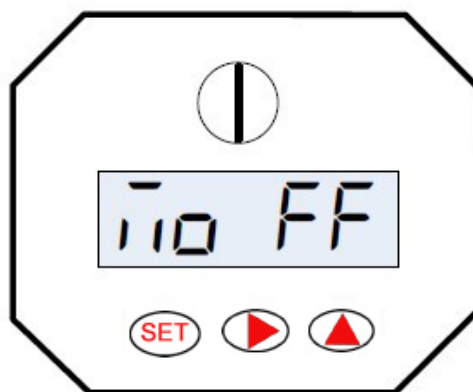


picture 4

- 3 Press the  to enter the desired time for the valve to be open when in the menu for valve open time, based on the range available indicated above. When in the menu for the valve close times, enter the desired time based on the available ranges indicated above. Move to the next selection with the  button. To change numerical values press the  button.
When ":" is flashing, set the "HS (hours)". Moving to the next selection by pressing .
When ":" is flashing, a selection can be made in the "MS (minutes)" setting. Moving to the next selection by pressing .
When ":" is flashing, set the SS (seconds).
Press **SET** when finished. Screen will return to the first menu, press **SET** again. Enter the next menu to set the desired closed times.





Picture 5






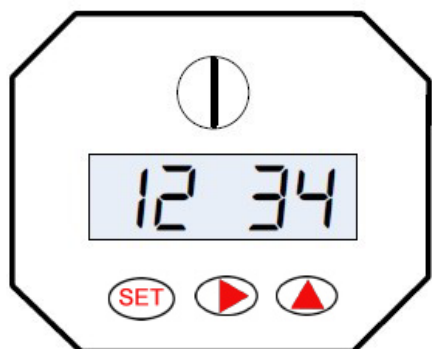
Picture 6

4 Press the **SET** &  , the screen display (picture 5) , indicating manual open option,

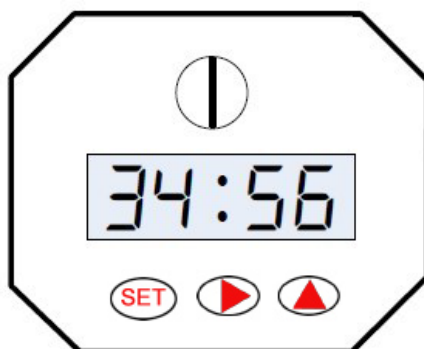
Press the **SET** &  the screen display (picture 6), indicating manual close option.

Exit the manual mode by pressing the **SET** &  or **SET** &  . Press the power on button to resume normal function with established time settings.

5 Press **SET** to enter the first menu the interface will show Cnt. Press  to enter the display for the number of cycle times, up to 9999. The screen will display on-off with an open and close count of one to one. Manually operated times will not be displayed. The selection of the number of open or close times will flash and can be selected by pressing the  . To clear selection press the  .



Picture 7




Picture 8

6 In the normal working state, the displayed time is a countdown timer according to the current function of the valve.(e.g. Valve open time is 10 S, the clock will count down from 10S).

When the ":" is flashing, the timer is indicating the "HS (hours)" : "MS (minutes)" : "SS (seconds)".

Stalling protection function

When the actuator detects a potential stall, it will run in the reverse direction. The valve will try to reach the open or closed position, and repeat the same action again. Meanwhile the display will flash **0000-0001** on the screen (indicating the current time of attempted retries). If it fails a third cycle attempt, the valve will stop running and display ERR1 on the screen. An alarm will sound when the valve is in an error state. Press any key to deactivate the alarm and press the  to exit the alarm mode.